

## ***Storm Water Management Services***



### **Capabilities**

- Storm Water Containment Evaluation
- NPDES Permitting & Monitoring
- BMP Consulting
- Erosion Inventories
- Hydrologic Studies
- Water Quality Studies
- Erosion and Sediment Control
- Storm Water Pollution Prevention Plan (SWPPP)

## Key Projects

### NPDES Permitting and Storm Water Consulting, Ada County Highway District, Idaho

- Assist in NPDES permit application
- Prepare monitoring plans & perform NPDES permit required storm water monitoring
- Analyze storm water quality data to identify statistically significant trends
- Evaluate storm sewer system performance
- Estimate pollutant loading
- Identify seasonal pollutant trends
- Prepare NPDES permit required annual reports to EPA
- Evaluate Best Management Practices (BMP) Performance

### Data Storage and Automated Reporting System Development, Boise City and Garden City NPDES Co-Permittees

- Design and develop expandable relational database application for storage and reporting of all NPDES permit monitoring programs
- Develop expanded automated reporting features including charts and statistics
- Develop modules for automatically importing electronic data files provided by laboratories
- Relational database development
- Automated data reporting and presentation
- Automated electronic data importation

### Storm Water Permitting Services, Gustafson, LLC., Idaho

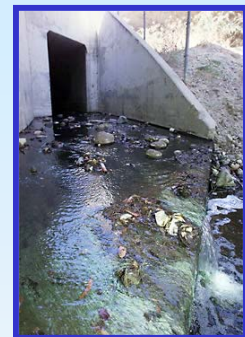
- Storm water permitting services
- Application for a Conditional No Exposure Exclusion (as provided for under the new Phase II Storm Water Rule)
- Inspect recent modifications to facility for impact on storm water

### Simplot Transportation, Caldwell, Idaho

- Evaluated facility's storm water drainage system and prepared maps showing predominant drainage pathways.

### Simplot Food Group, Aberdeen, Idaho

- Used GPS and land surveying techniques to map 40 acre food products manufacturing facility and evaluate capacity of storm water detention structures.
- Calculated runoff using Rational Method.
- Compared storm water detention capacity to theoretical runoff from 25-year, 24-hour storm.



**Environmental Science & Engineering Solutions for the 21<sup>st</sup> Century**